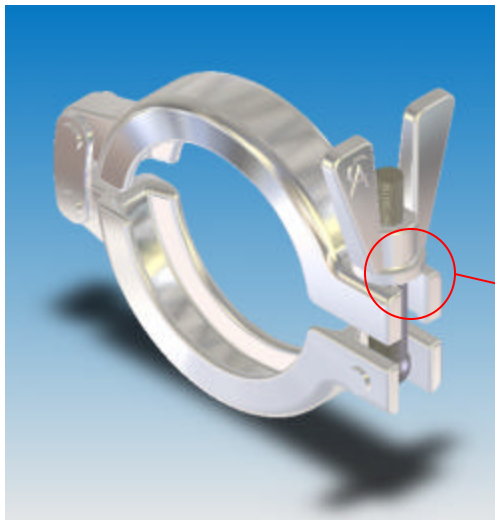
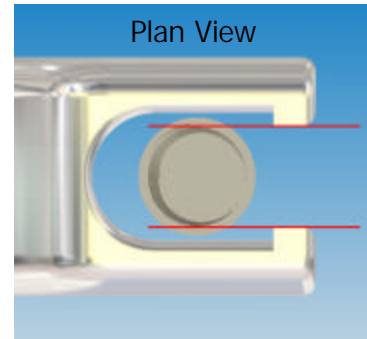
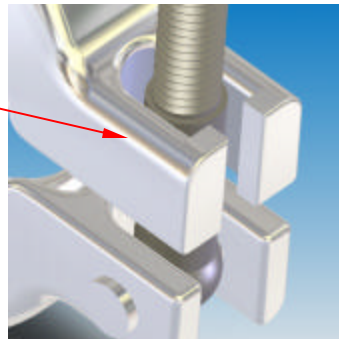


NEW PRODUCT
SH STYLE SAFETY CLAMP

Advanced Couplings have added to their product range of clamps with the introduction of the SH Style Safety Clamp. Developed using the template of our market leading SH Clamp we have designed and manufactured the patented Safety Clamp to **improve operator safety** throughout the industry, in-particularly **targeting hazardous high temperature steam lines**.



The 'gate' style section combined with the stepped eyebolt ensures that the clamps bolting mechanism cannot swing open whilst the clamping union is part or fully assembled.



Releasing the clamp is only possible when the wing-nut has been significantly loosened to enable the smaller diameter of the eyebolt to swing and pass through the sectioned gate, this ensures the clamp cannot be knocked or accidentally opened. Complete wing-nut removal is not necessary to open the clamp but the design guarantee's that the eyebolt cannot swing open whilst the clamping union is subjected to either clamping forces or internal pressures.



PATENTED

PATENTED

PATENTED

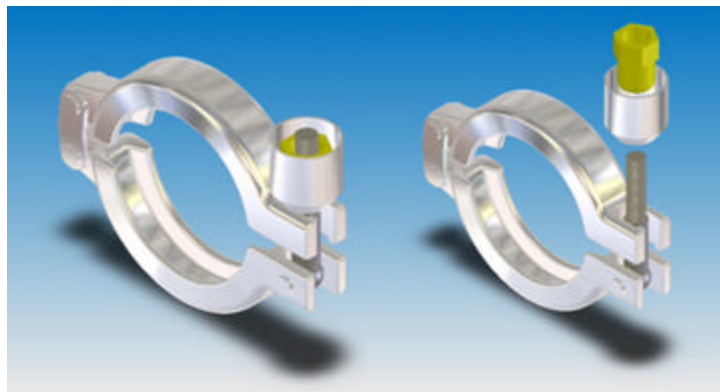
PATENTED

NEW PRODUCT
SH SAFETY LOCK-OUT CLAMPS

Advanced Couplings Ltd can now offer varying styles of the SH Safety Clamp with the introduction to our range of the Shrouded Safety Clamp and Lock-Out Safety Clamp, both variations are designed to **further increase the safety of hazardous high temperature piping lines often associated with steam and CIP / SIP cleaning processes.**

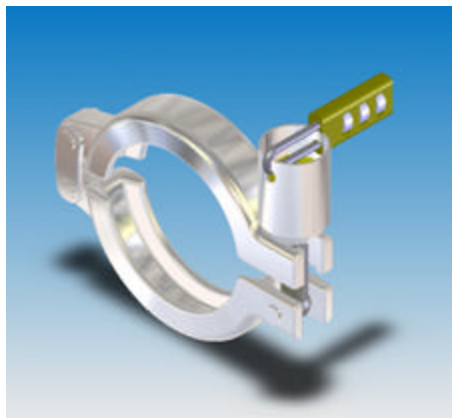
Shrouded Safety Clamp

The shrouded safety clamp is based around the design principal of the standard SH safety clamp. This new variation benefits from the added safety feature of a domed nut replacing the wing-nut. Using the domed nut guarantee's that the clamp cannot be loosened by hand, this coupled with the added security of the free rotating nut shroud determines that the clamp can only be released using the correct socket adapter, alleviating problems where the piping line can easily be tampered with or accidentally released.



Lock-Out Safety Clamp

The Lock-Out safety clamp is an advanced version of the shrouded safety clamp, the wing-nut has again been replaced with a shrouded domed nut, the shroud however is extended in length and modified to accept a number coded or key operated padlock. Once the clamp has been assembled, the padlock's shackle can be passed through the holes in the nut shroud stopping the hexagon head of the nut from being accessed and loosened by a spanner or socket set. The Lock-Out safety clamp ensures the process / piping line can only be accessed by a designated maintenance engineer who has the padlock's key / number combination.



PATENTED

PATENTED

PATENTED

PATENTED